

YBSD Open House 4-3-12

REMOVAL  
OF  
BLACKBERRY  
CREEK DAM



# Agenda

## Removing Blackberry Creek Dam



- ① **Where are we going?**
- ② **How are we going to get there?**
- ③ **Who are the players?**
- ④ **What do we need to get there?**
- ⑤ **What are the bumps along the way?**
- ⑥ **ARE WE THERE YET?**

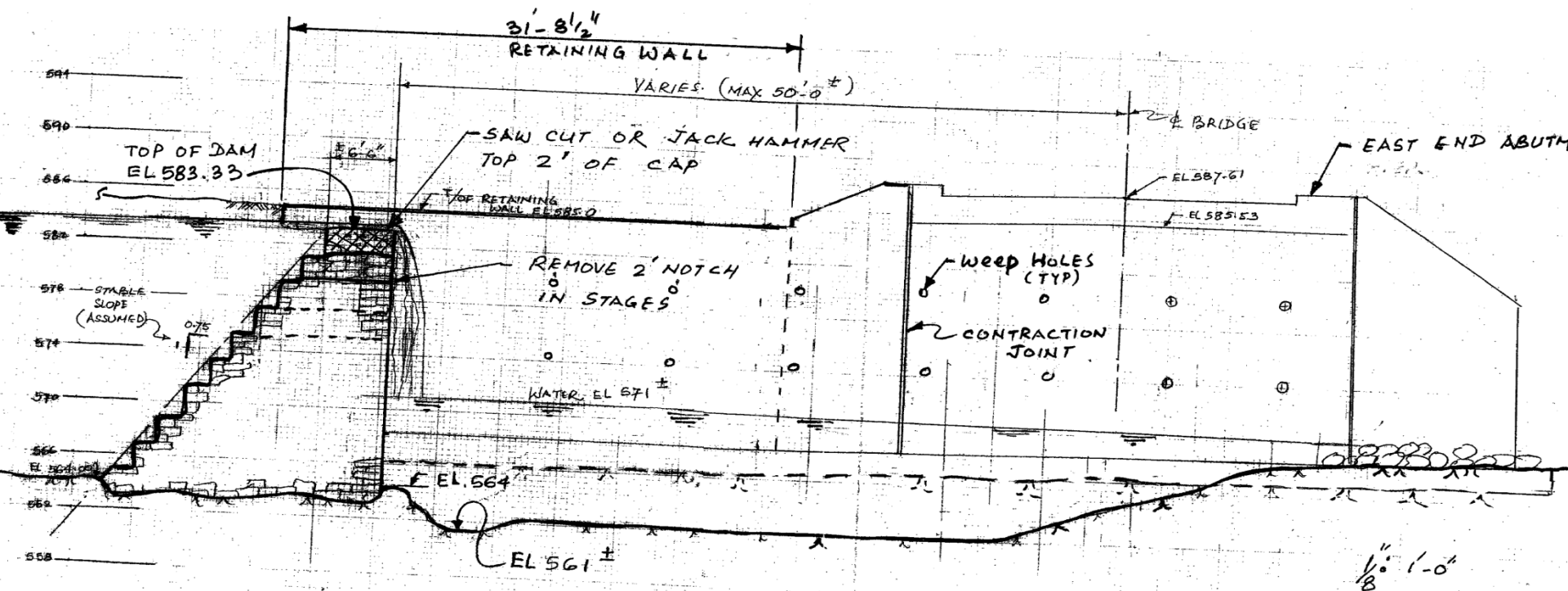
Where are we going? Here



# How are we going to get there?

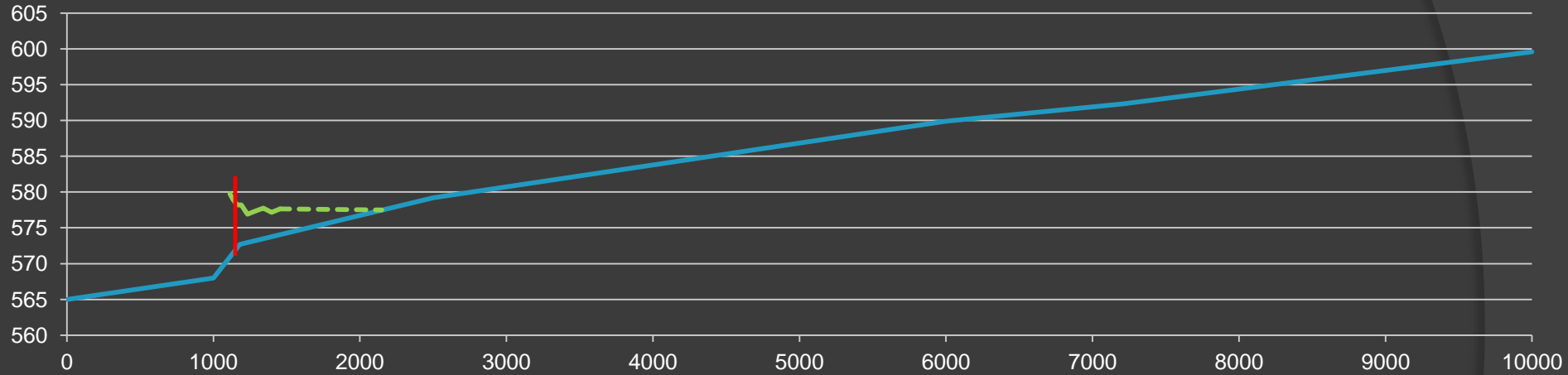


# EXISTING DAM

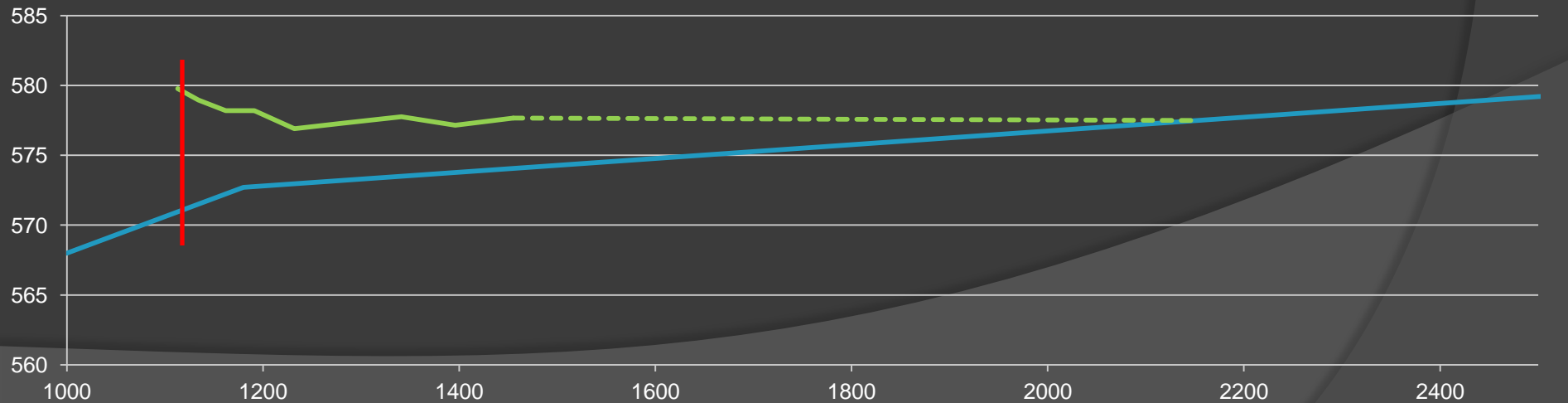


# Recent Sediment Probing

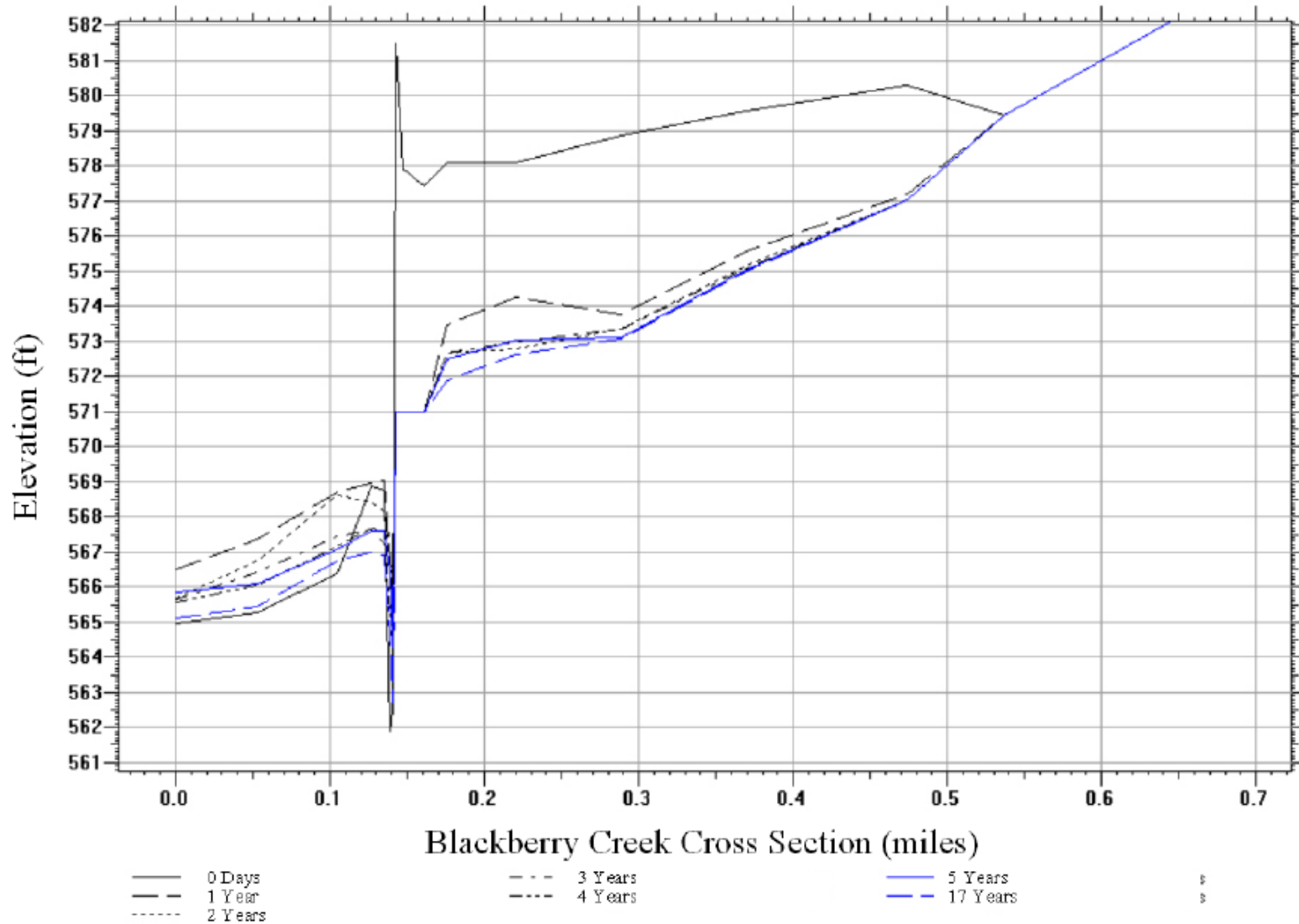
FIS Channel Bottom    OWR Surveyed Top of Silt    Estimated Silt



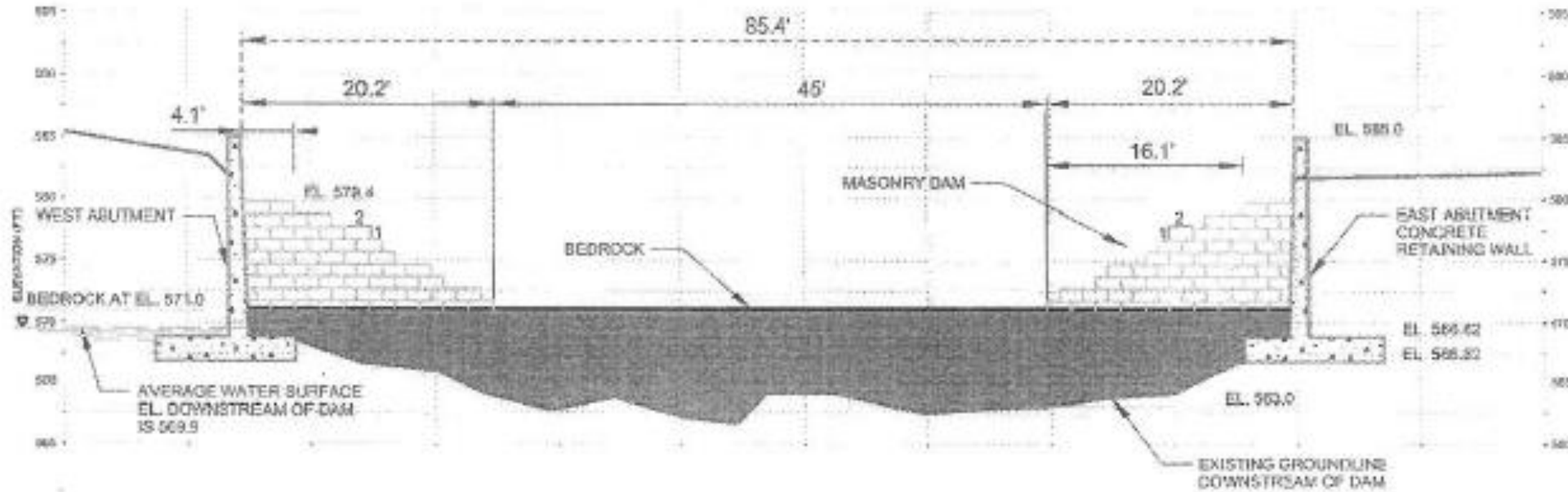
FIS Channel Bottom    OWR Surveyed Top of Silt    Estimated Silt



# Previous Corps Plan: Notch and Erode

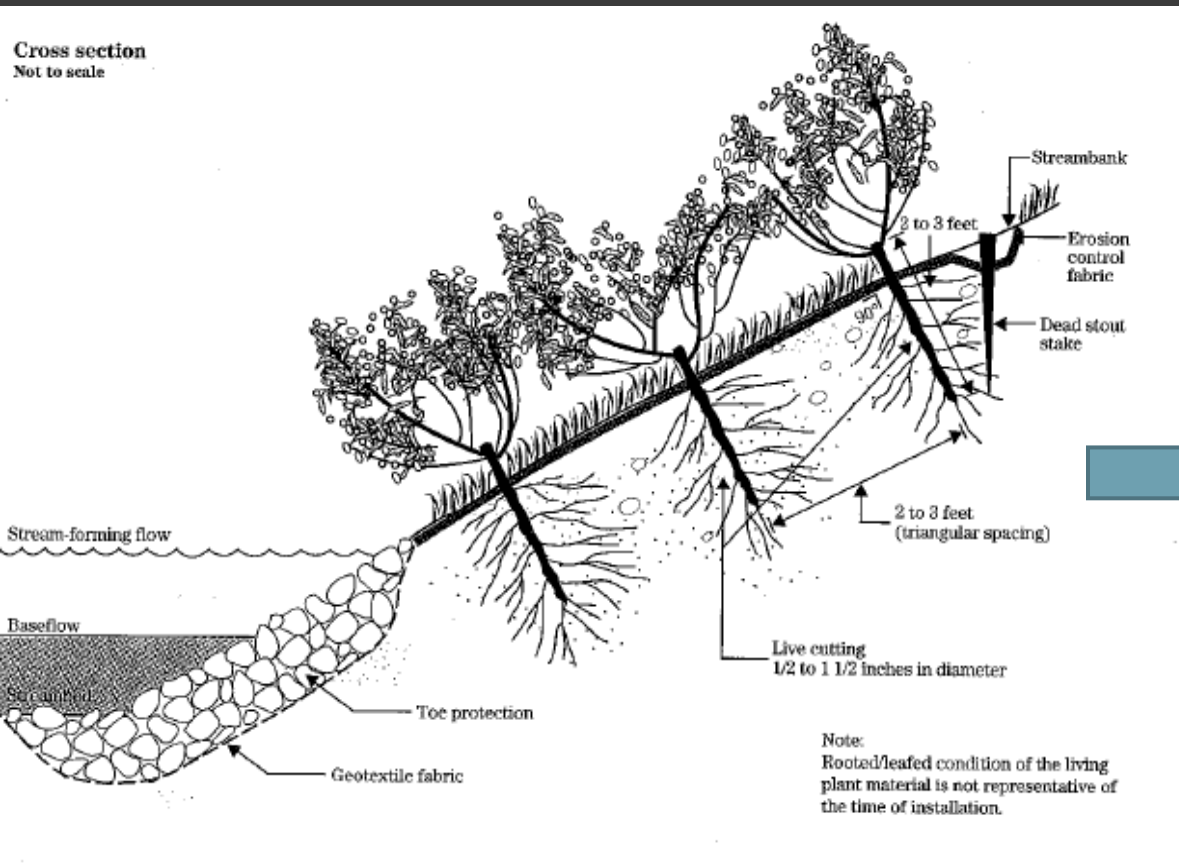


# Dam Removal Plan



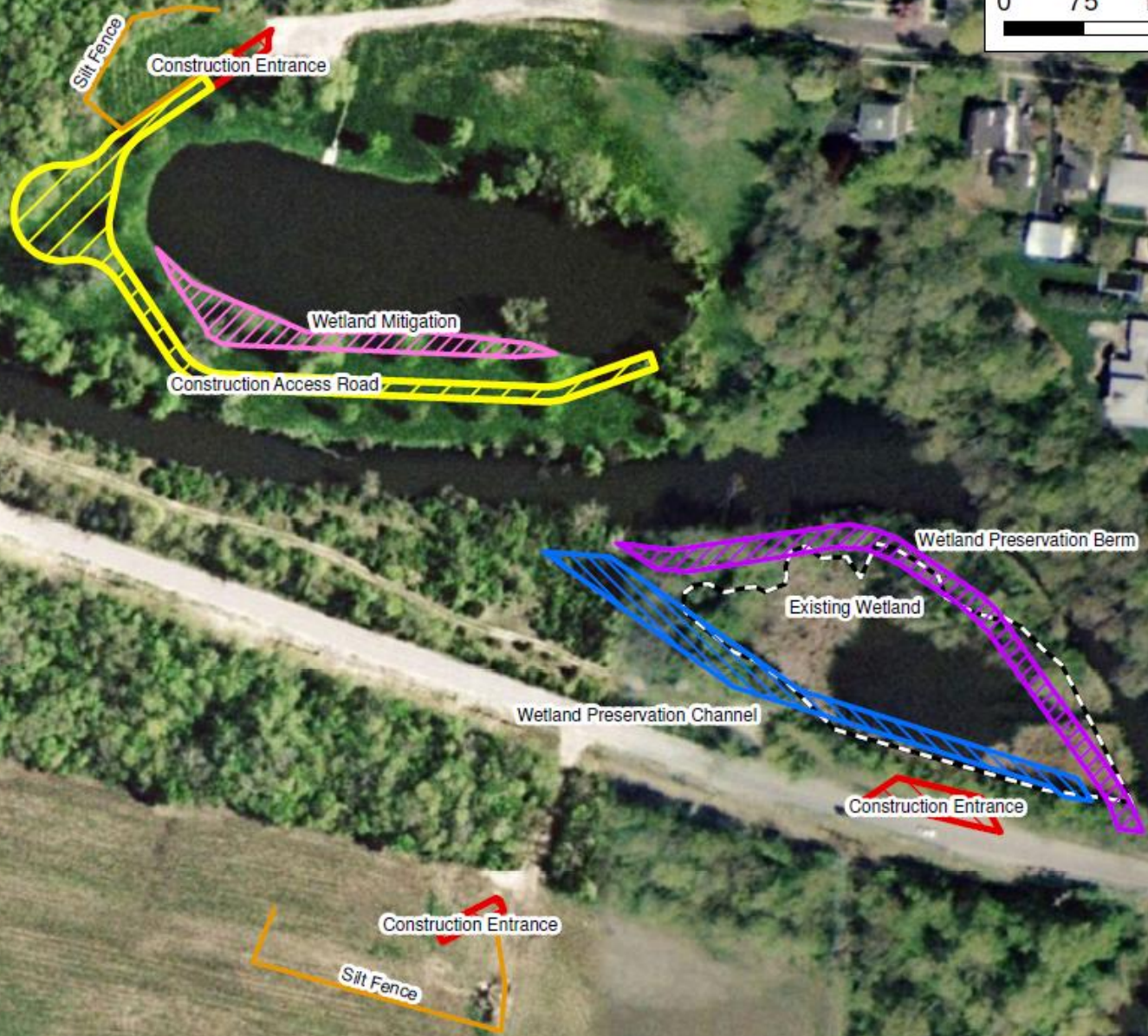


# Blackberry Creek Dam Removal Plan

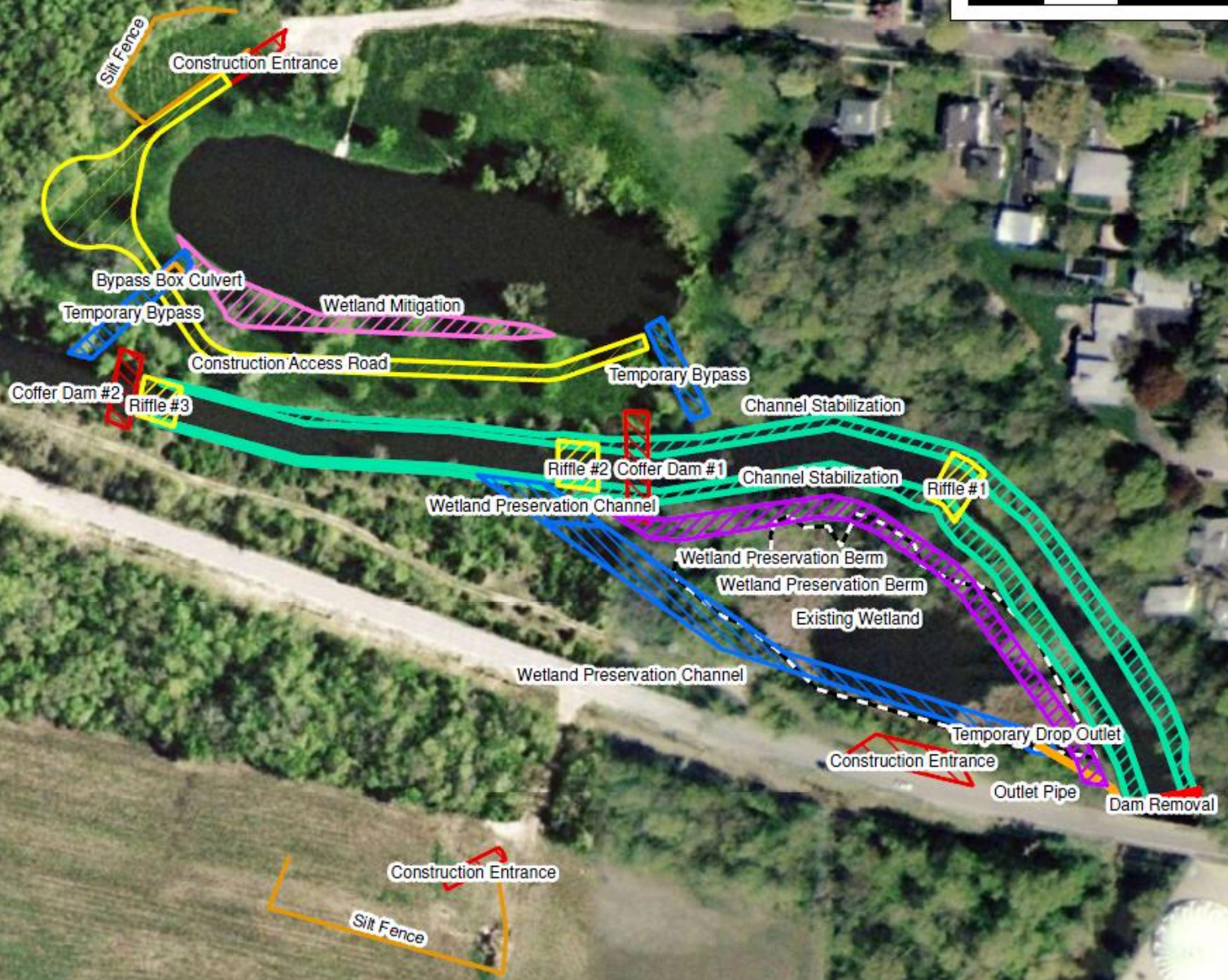
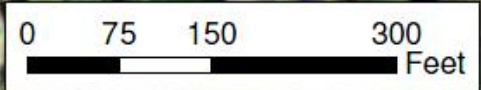


Robin Sotir & Associates Photo

# Phase 1 Overview

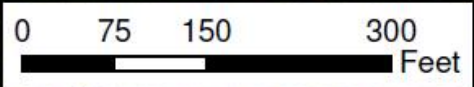


# Phase 2 Overview Map





# Phase 2 Overview Map



Wetland Mitigation

Riffle #3

Channel Stabilization

Riffle #2

Channel Stabilization

Riffle #1

Wetland Preservation Channel

Wetland Preservation Berm

Wetland Preservation Channel

Dam Removal

# Who are the players?

- YBSD
- IDOT
- IHPA
- Corps
- IDNR

Why IDNR?



# What do we need to get there?



1. Sponsorship Agreement
2. Project Plan including a location for spoil of removed sediments.
3. IDOT Bridge Project
4. Permits (Nationwide 27).
5. Land Rights: construction and O&M.
6. Funding (\$1,000,000 +)
7. Monitoring and maintenance.

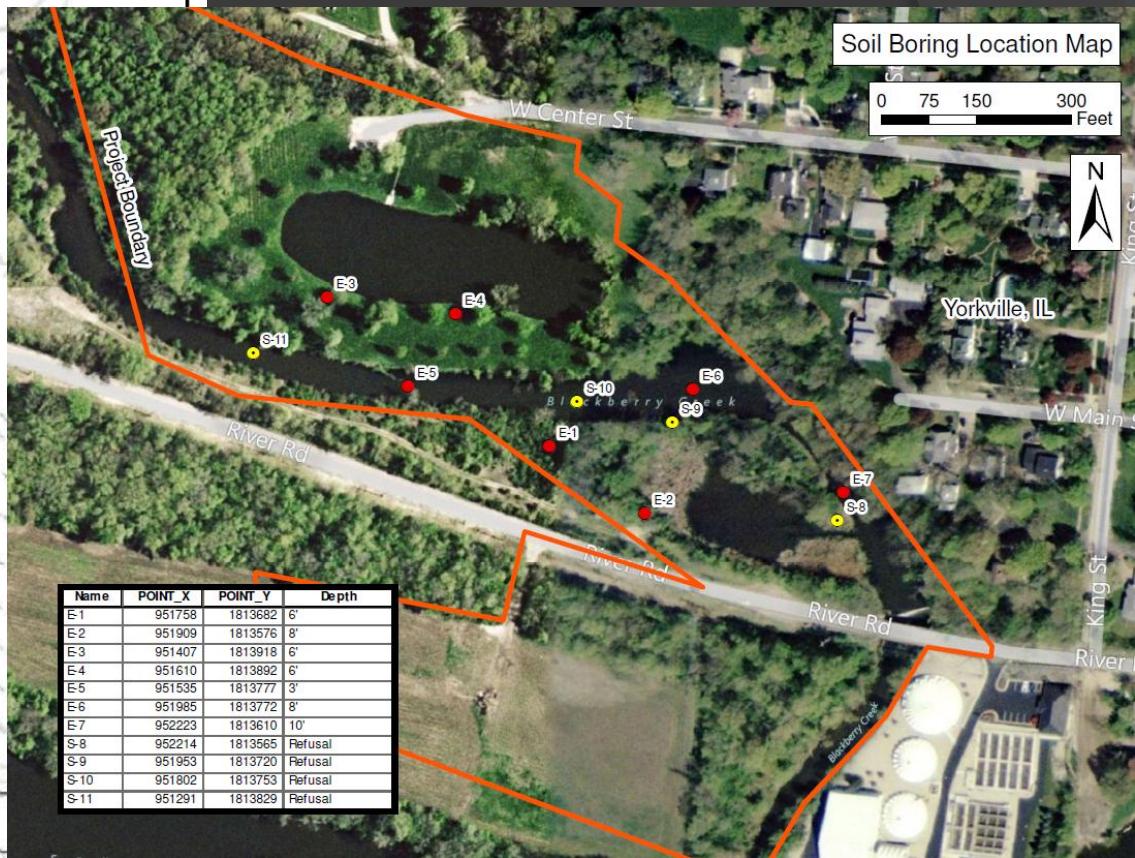
# What are the bumps along the Road?

- Sediment Disposal
- Weather
- Multiple Contractors
- Time





# Sediment Sampling



Name	POINT_X	POINT_Y	Depth
E-1	951758	1813682	6'
E-2	951909	1813576	8'
E-3	951407	1813918	6'
E-4	951610	1813892	6'
E-5	951535	1813777	3'
E-6	951985	1813772	8'
E-7	952223	1813610	10'
S-8	952214	1813565	Refusal
S-9	951953	1813720	Refusal
S-10	951802	1813753	Refusal
S-11	951291	1813829	Refusal

**SEDIMENT CORE LOCATION DIAGRAM  
 USAGE  
 SEDIMENT SAMPLING & ANALYSIS  
 BLACKBERRY CREEK, ILLINOIS**

Project No:	11077047
Drawn By:	AS (A/CWH)
Checked By:	AS (A/CWH)
Approved By:	AS (A/CWH)
Date:	October 25, 2007
Revised By:	
Figure #:	3

**Terracon**  
 135 Ambassador Drive  
 Naperville, Illinois 60540  
 (630) 717-4283

File Name: 11077047-USAGE.dwg

APPROXIMATE SCALE: 1"=40'

DIAGRAM IS FOR GENERAL LOCATION ONLY, AND SHOULD NOT BE USED FOR CONSTRUCTION PURPOSES.

PROJECT NUMBER: 11077047-USAGE.dwg

# ARE WE THERE YET???

2012

- May – Complete Phase 1 Construction, Complete Phase 2 Plans and Specs
- June - IDOT Bulletin for Phase 2 work  
Bridge Contractor Installs Bypass Drop Structure During Bridge Replacement
- August - Phase 2 Bid Letting
- October - Begin Phase 2 Construction  
(End June 2013)

Thank you



# Questions?

